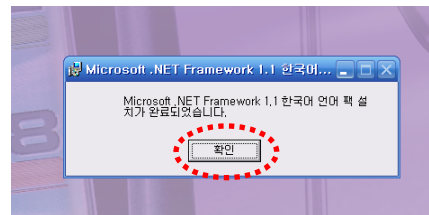
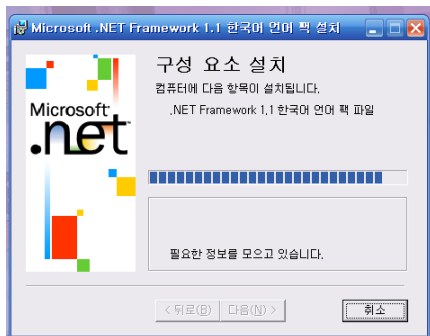
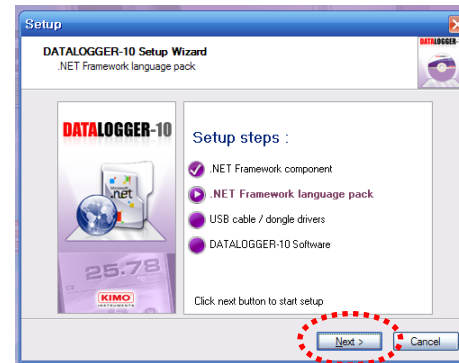
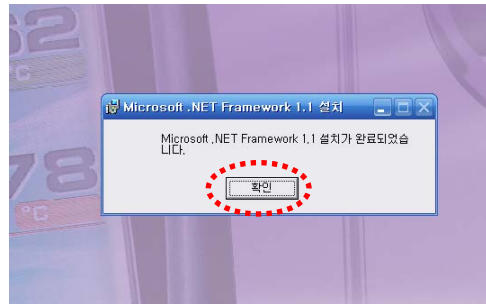
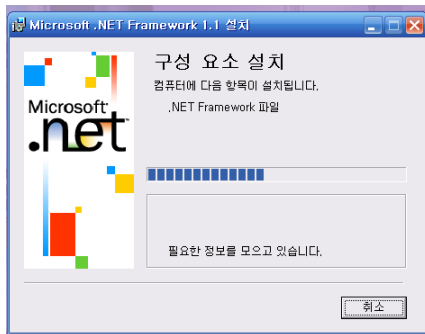
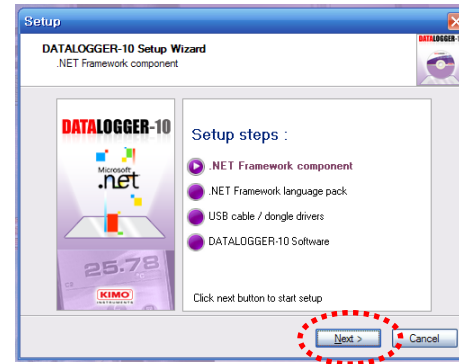
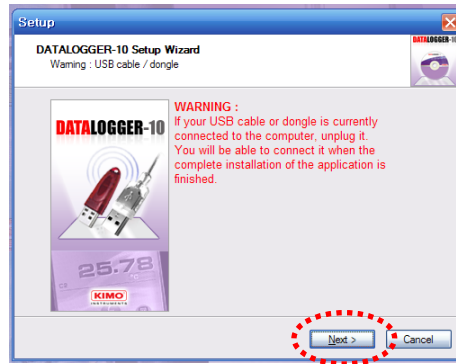


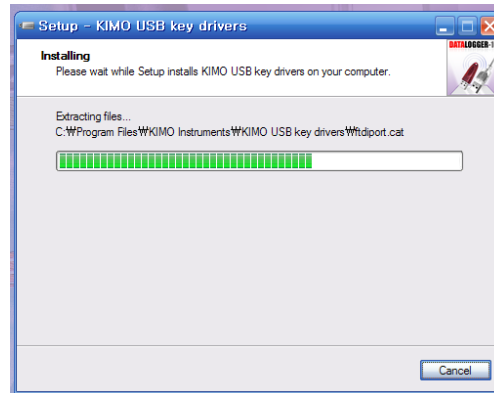
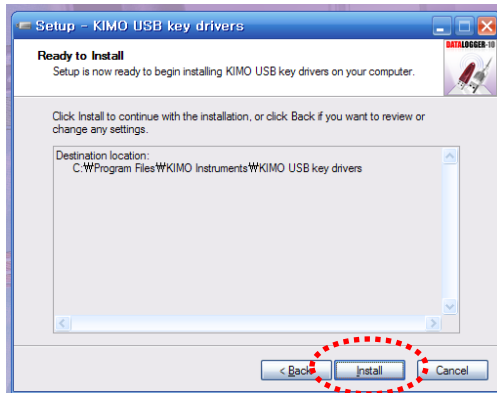
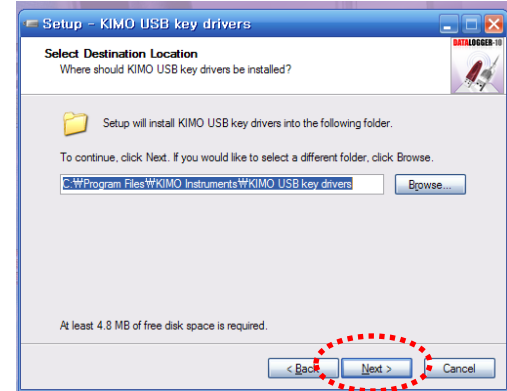
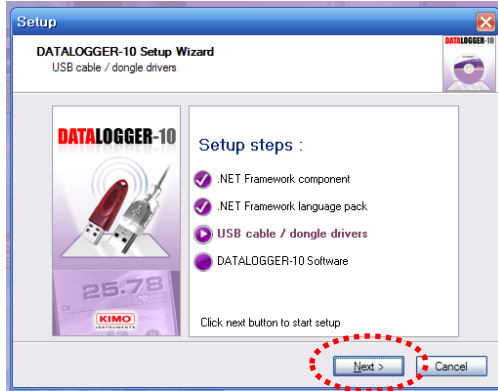


# 한글 사용 설명서

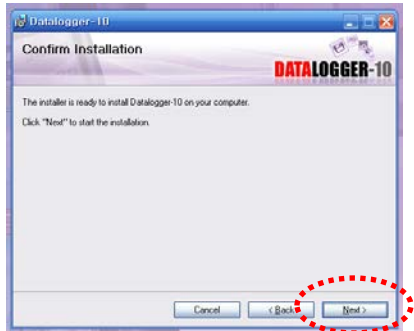
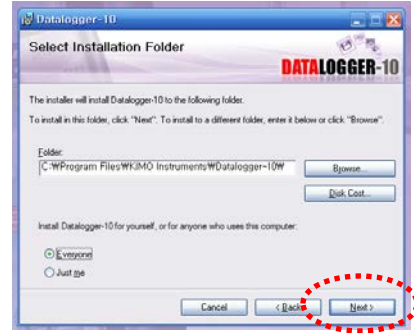
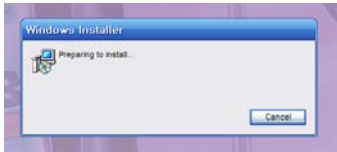
# 1. 소프트웨어 설치



# 1. 소프트웨어 설치



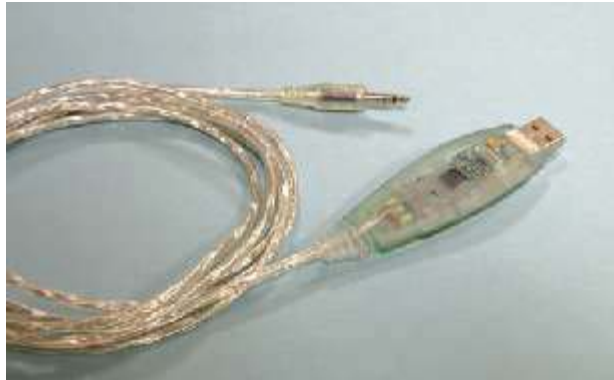
# 1. 소프트웨어 설치



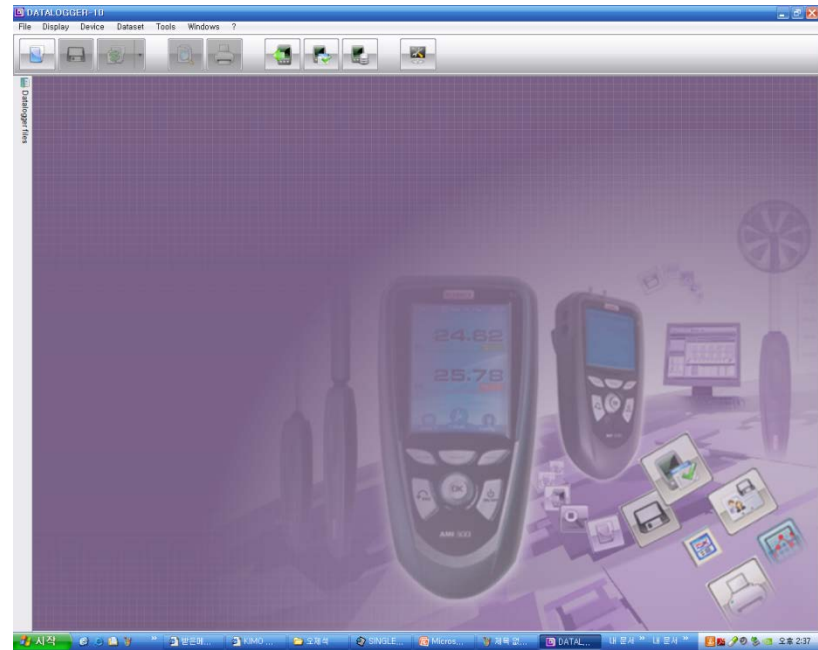
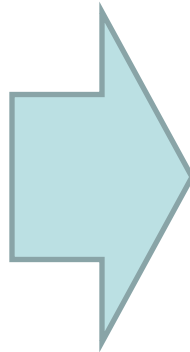
## 2. 소프트웨어 실행



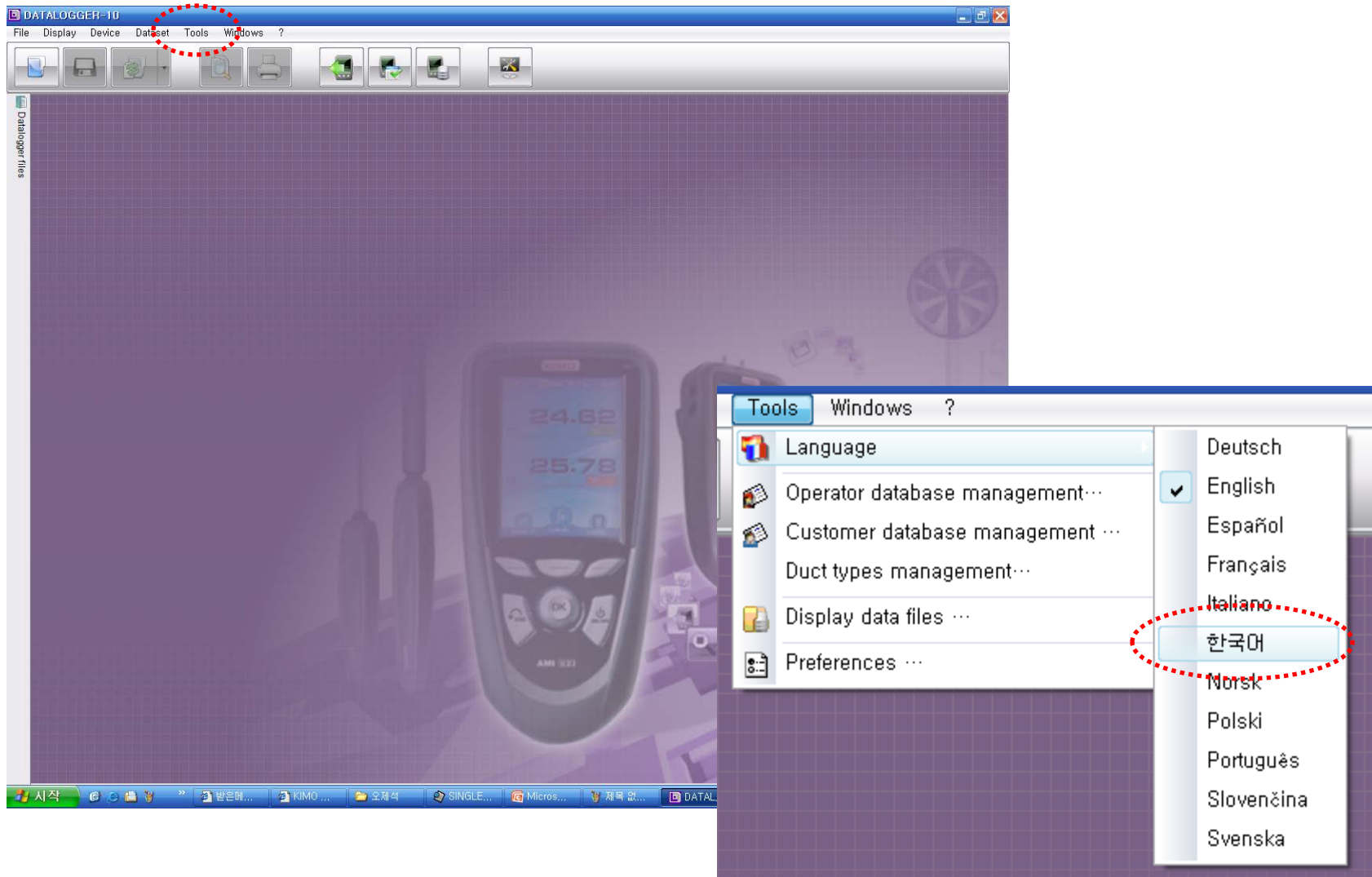
### 3. 소프트웨어 연결



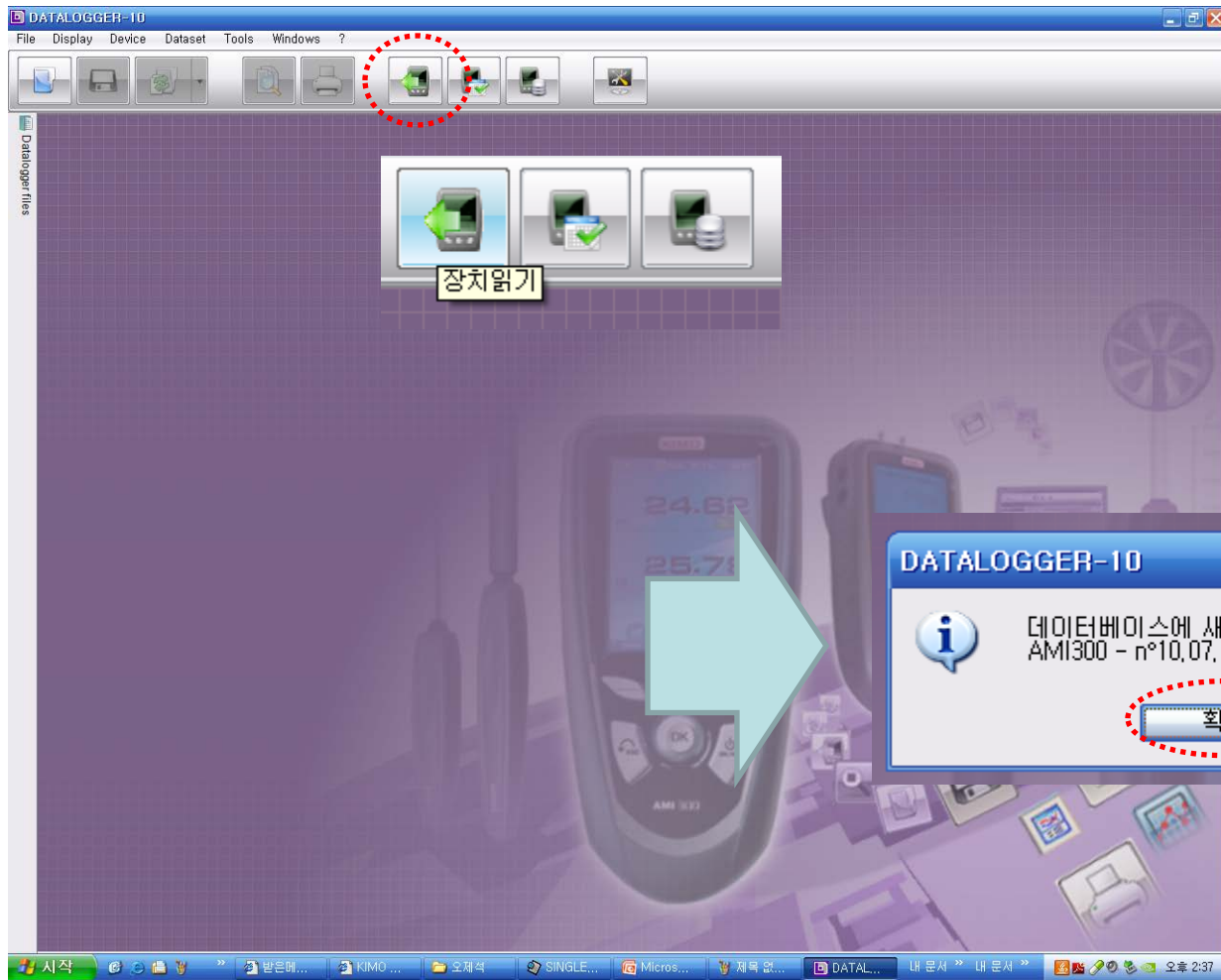
- 전원 "on"  
- 케이블 연결



## 4. 소프트웨어 언어변경 방법



## 5. 소프트웨어 장비 등록



DATALOGGER-10



데이터베이스에 새로운 제품이 추가되었습니다. :  
AM1300 - n°10,07,7006

확인



## 5. 소프트웨어 장비 등록

DATALOGGER-10

File Display Device Dataset Tools Windows ?

물품 재고 관리

**AMI300**  
n°10.07.7006

조정

조정날짜: 2010-08-26

인증 번호:

유효기간: 12 월

경고 시간: 30 낮

(증명 경과 이전)

확인?

물품 재고 관리

**AMI300**  
n°10.07.7006

조정

조정날짜: 2010-08-26

인증 번호: 10077006

유효기간: 12 월

경고 시간: 30 낮

(증명 경과 이전)

확인?

시작 | 받은메... | KIMO ... | 오제석 | SINGLE... | Micros... | 제육 없... | DATAL... | 내 문서 | 내 문서 | 오후 2:37

## 5. 소프트웨어 장비 등록

The image shows two sequential screenshots of the DATALOGGER-10 software interface. The top screenshot displays the '장치읽기' (Device Reading) window with the message '장치가 연결되었습니다.' (Device connected). It shows details for an AMI300 device, including serial number, software version, date, and certificate information. A red dashed circle highlights the '데이터 전송하기' (Transfer Data) button. A large light blue arrow points from this window to the bottom screenshot. The bottom screenshot shows the same window, but with a dialog box overlaid. The dialog box contains the text: '데이터베이스에 새로운 제품이 추가되었습니다. : 압력모델 : 2500pa - n°10,12,1281' and a '확인' (OK) button, which is also circled in red.

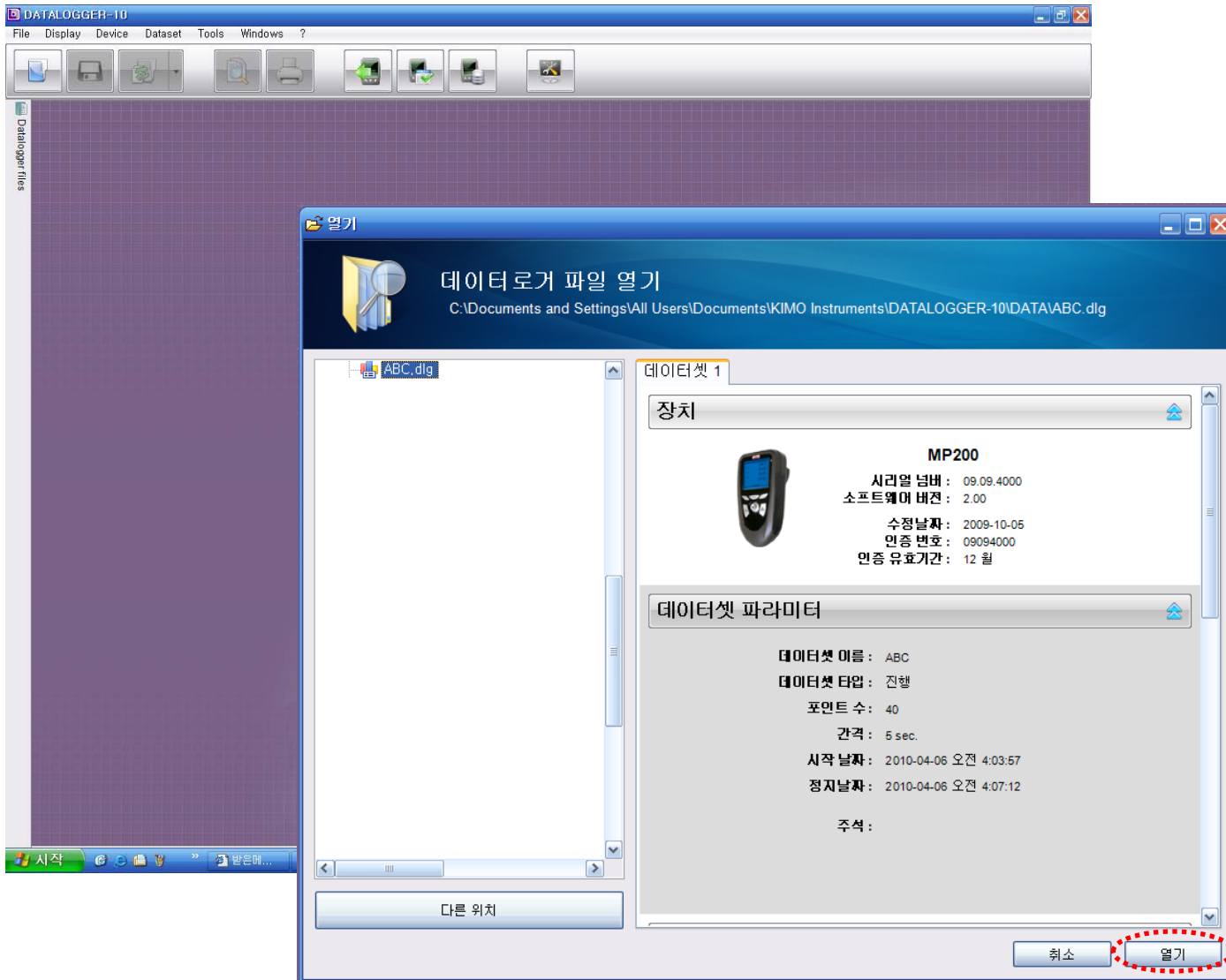


# 5. 소프트웨어 데이터 받기

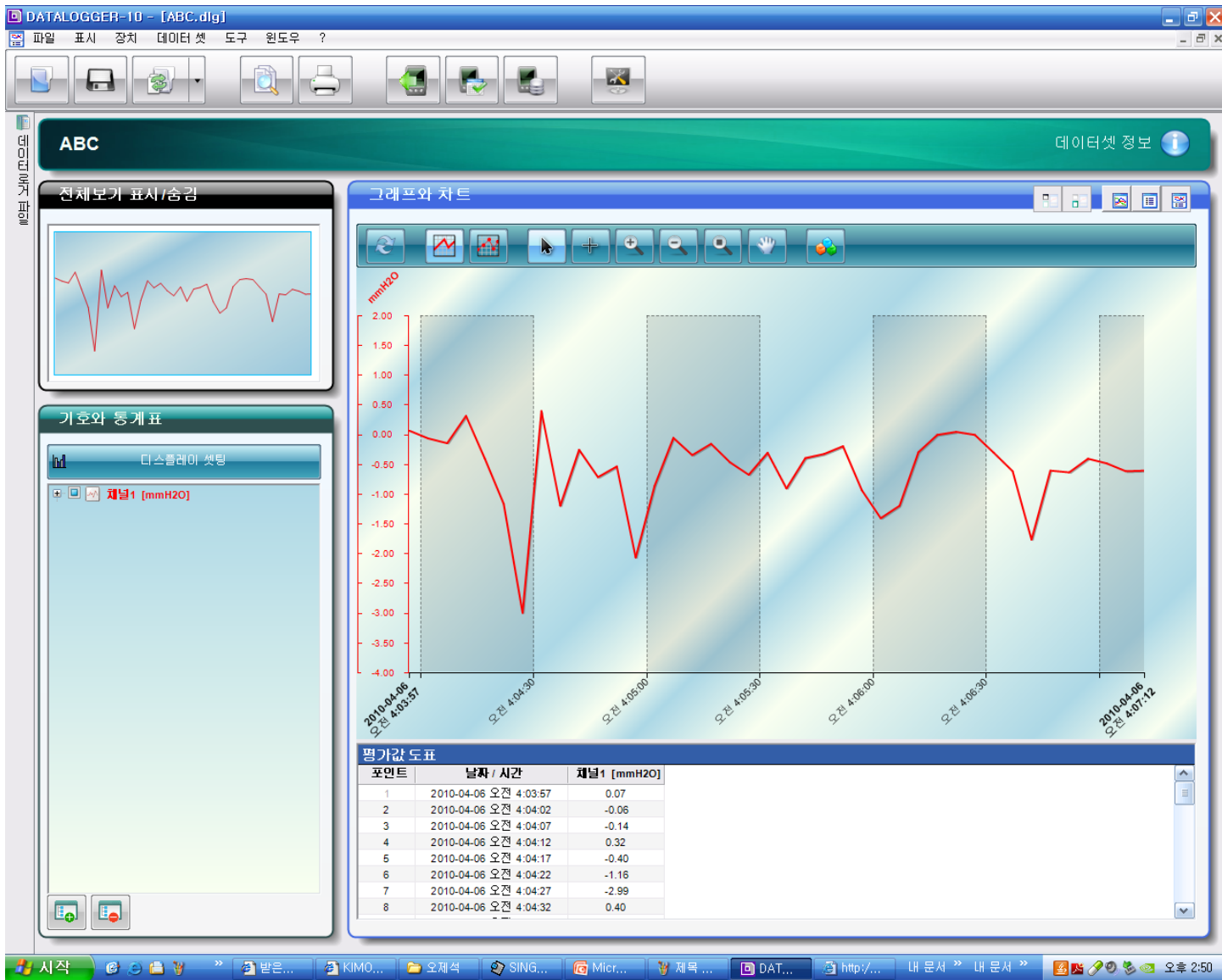
The screenshots illustrate the following steps in the DATALOGGER-10 software:

- Step 1:** The '장치 데이터셋 내리받기' (Download Device Dataset) window shows a tree view of devices and datasets. The '데이터셋 요약' (Dataset Summary) section displays details for a selected dataset, including start/end times and duration. A red dashed circle highlights the '다음' (Next) button.
- Step 2:** The '사용자' (User) and '고객' (Customer) information entry screen. Fields include name, phone number, fax, and email. A red dashed circle highlights the '다음' (Next) button.
- Step 3:** The '저장할 파일 불러' (Load File to Save) window. It shows a file browser for the save location and a list of file names to be downloaded. A red dashed circle highlights the '완료' (Finish) button.
- Step 4:** The '다운로드 중...' (Downloading...) window. A progress bar shows the download status. A dialog box asks for confirmation to download the selected dataset. A red dashed circle highlights the '확인' (OK) button.

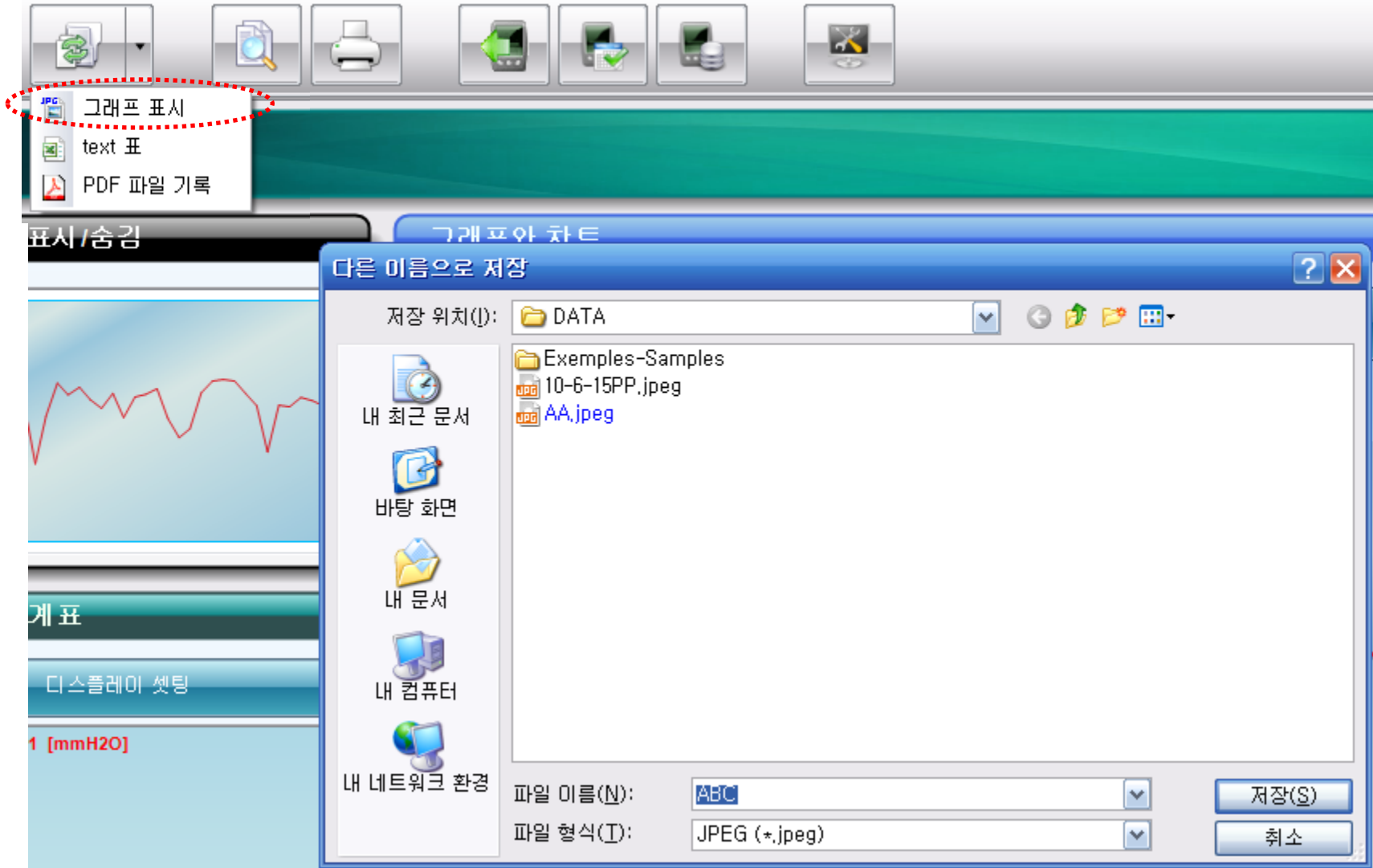
## 5. 소프트웨어 데이터 받기



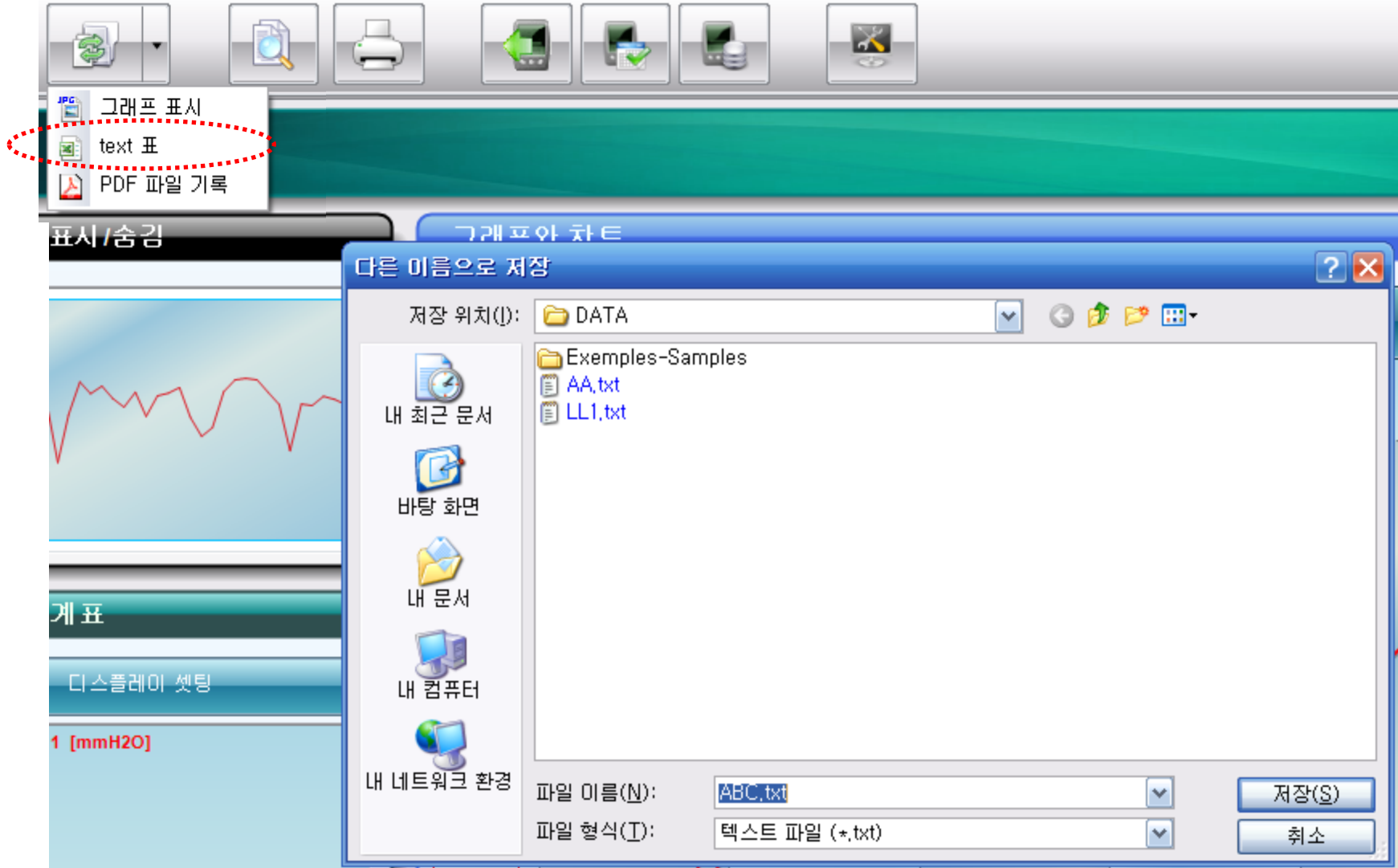
# 5. 소프트웨어 데이터 받기



## 6. 소프트웨어 그래프 이미지 파일 추출

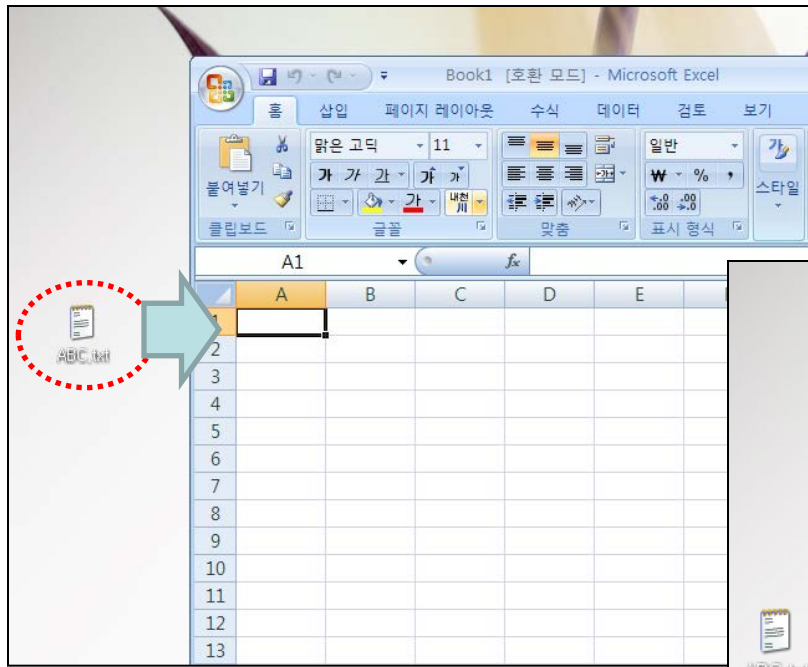


## 7. 소프트웨어 차트 텍스트 파일 추출





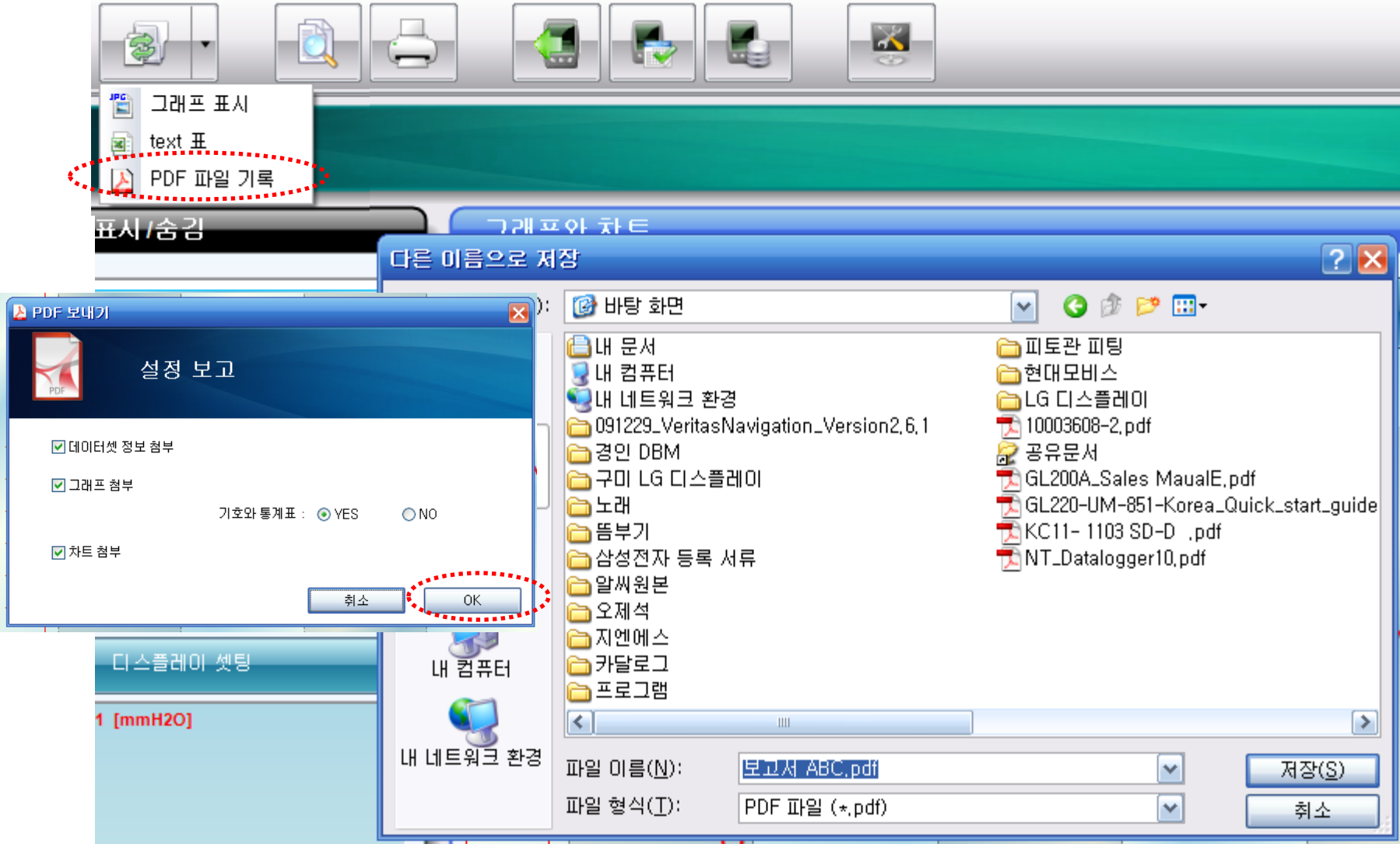
## 7. 소프트웨어 차트 텍스트 파일 엑셀 변환



A screenshot of Microsoft Excel showing a spreadsheet with data imported from 'ABC.txt'. The data is organized into columns A, B, and C. Column A contains '포인트' (Point), column B contains '날짜 / 시간' (Date / Time), and column C contains '채널1 [mmH2O]' (Channel 1 [mmH2O]).

	A	B	C	D
1	포인트	날짜 / 시간	채널1 [mmH2O]	
2	1	2010-04-06 오전 4:03:57	0.07	
3	2	2010-04-06 오전 4:04:02	-0.06	
4	3	2010-04-06 오전 4:04:07	-0.14	
5	4	2010-04-06 오전 4:04:12	0.32	
6	5	2010-04-06 오전 4:04:17	-0.4	
7	6	2010-04-06 오전 4:04:22	-1.16	
8	7	2010-04-06 오전 4:04:27	-2.99	
9	8	2010-04-06 오전 4:04:32	0.4	
10	9	2010-04-06 오전 4:04:37	-1.19	
11	10	2010-04-06 오전 4:04:42	-0.25	
12	11	2010-04-06 오전 4:04:47	-0.71	
13	12	2010-04-06 오전 4:04:52	-0.53	
14	13	2010-04-06 오전 4:04:57	-2.06	

## 8. 소프트웨어 보고서 양식 PDF 파일 추출



# 8. 소프트웨어 보고서 양식 PDF 파일 추출

